

***When You're Serious
About Sourcing...***



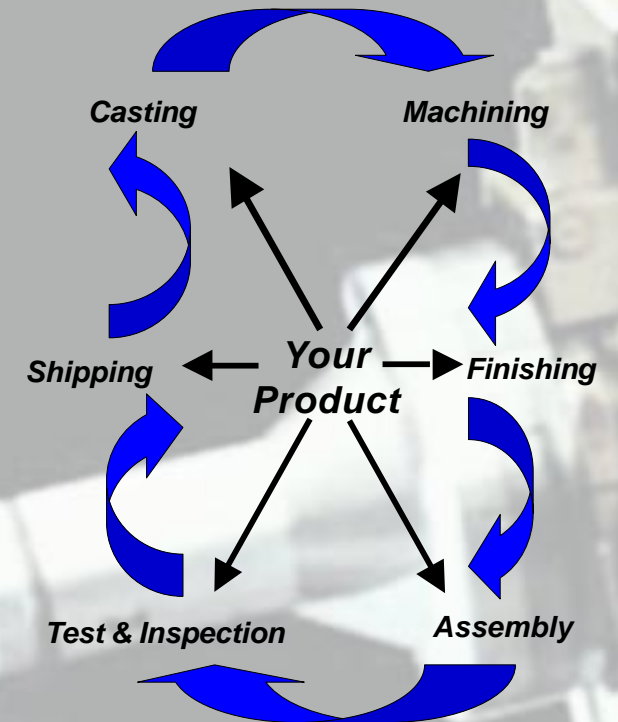
***...Your Supply
Chain Is Ready***

***The Rockford Area is a
region of extraordinary
manufacturing strengths.***

**Our 1500 manufacturers
represent a vast array of
manufacturing processes
including:**

- ▣ ***Design***
- ▣ ***Fabricating***
- ▣ ***Boring***
- ▣ ***Casting***
- ▣ ***Turning***
- ▣ ***Milling***
- ▣ ***Hobbing***
- ▣ ***Grinding***
- ▣ ***Injection Molding***
- ▣ ***Printing***
- ▣ ***Stamping***
- ▣ ***Heat Treating***
- ▣ ***Plating***
- ▣ ***Assembly***

***We can take care of
your outsourcing
needs at any stage of
your manufacturing
process..***



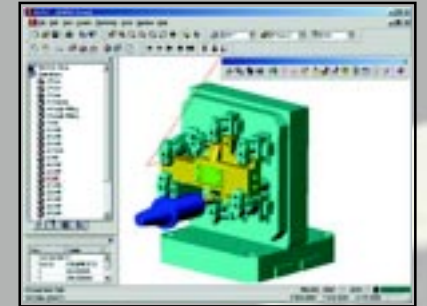
***...and our central
location and transpor-
tation infrastructure
save you money***

The Rockford area is home to the **second largest UPS air hub** in the nation, and it is accessible to almost 30% of the nation's population within a 500-mile radius.



Rockford Area manufacturers can provide an integrated supply chain, rapid product turn-around, and world-class employees skilled in:

- ✓ Tool Making
- ✓ Die Making
- ✓ Set-up
- ✓ Design
- ✓ Chemical Processing
- ✓ Computer Numeric Control (CNC)
- ✓ Computer Aided Design (CAD)
- ✓ Statistical Process Control
- ✓ Metallurgy
- ✓ Computer Assisted Manufacturing (CAM)



Low cost of living and high quality work will save you money. The Rockford Area is a center of excellence for many industries:

- aerospace*
- automotive*
- hydraulics*
- plastics*
- machine tool*
- electronics*
- automated assembly*
- motion control*
- construction and earth-moving machinery*

and every industry has companies certified in ISO, QS, and FAA.

Our skilled employees participate in numerous professional organizations, such as:

- ◆ Society of Manufacturing Engineers
- ◆ Society of Carbide and Tool Engineers
- ◆ Association for Quality and Participation
- ◆ Women in Metals Industry
- ◆ Society of Plastic Engineers
- ◆ American Society of Safety Engineers
- ◆ Institute of Electrical Engineers
- ◆ American Society for Quality Control
- ◆ American Institute of Plant Engineers



Quality infrastructure will help you get your job done

- ◆ high speed internet access
- ◆ an extensive highway system
- ◆ Union Pacific Intermodal Rail Hub
- ◆ Greater Rockford and O'Hare International Airports.

Distance and Travel Time for goods in transit from the Rockford Area to:

CITY	HIGHWAY MILES	DAYS BY RAIL	DAYS BY TRUCK
Atlanta	761	5	2
Chicago	90	1	1
Cincinnati	375	4	1
Cleveland	422	4	1
Detroit	373	4	1
Kansas City	412	2	1
Milwaukee	90	1	1
Minneapolis	353	3	1
St Louis	297	2	1
Toledo	318	4	1